

INTERUTTORI A PUNTALE SWITCH WITH SOCKET CONNECTOR

CODICE FAMIGLIA
FAMILY CODE

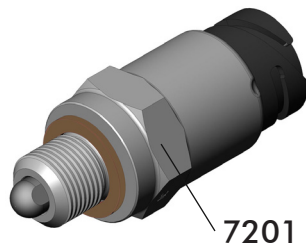
311001

DIN 72585

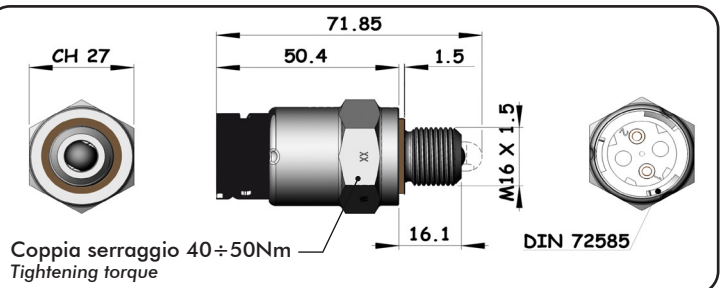
- Interruttore meccanico a puntale da utilizzarsi unicamente con carico max. sui contatti:
 - 5A lampada a 12V / 3A a 24V
oppure con carico minimo sui contatti:
 - 50 / 150 mA carico resistivo 12V / 24V.
 - Interruttore NON idoneo per impiego in ambiente con pressione.
 - Tenuta lato connettore DIN 72585: IP64K e IPX9K secondo NORMA DIN 40050 pat. 9 e NORMA CEI EN 60529.
-
- Mechanical push button switch only to be used with max load on contacts:
 - 5A bulb at 12V / 3A at 24V
or with minimum load on the contacts:
 - 50 / 150 mA resistive load 12V / 24V.
 - Switch NOT suitable for use in pressurised environments.
 - Socket connector DIN 72585: IP64K and IPX9K in accordance with DIN 40050 pat.9 and CEI EN 60529 standards.

CODICE / Order code
31100100125

CONTATTO / Contact
Normalmente chiuso
Normally closed



7201

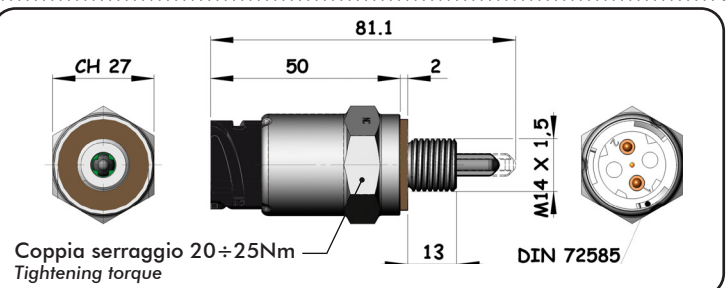


CODICE / Order code
31100100170

CONTATTO / Contact
Normalmente chiuso
Normally closed

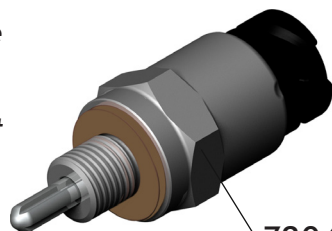


7206

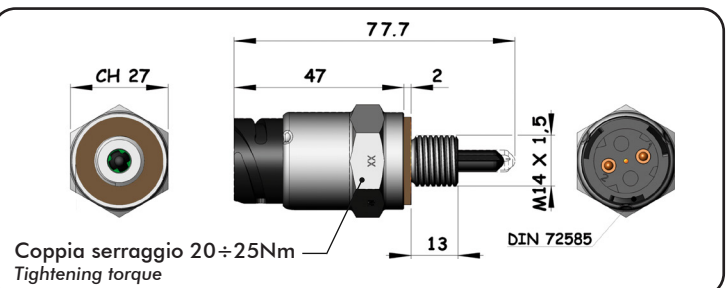


CODICE / Order code
31100100189

CONTATTO / Contact
Normalmente aperto
Normally open

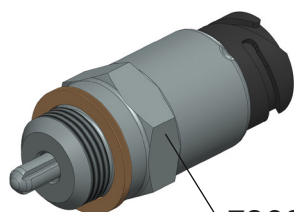


7204

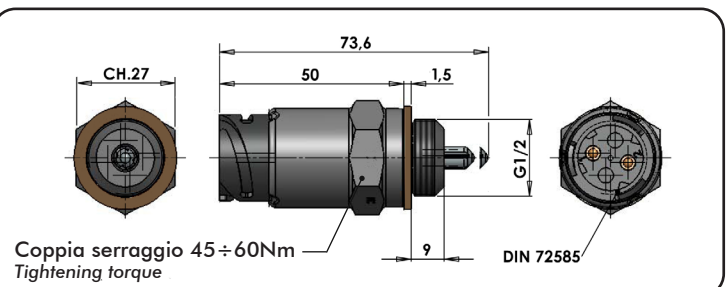


CODICE / Order code
31100100198

CONTATTO / Contact
Normalmente chiuso
Normally closed



7208



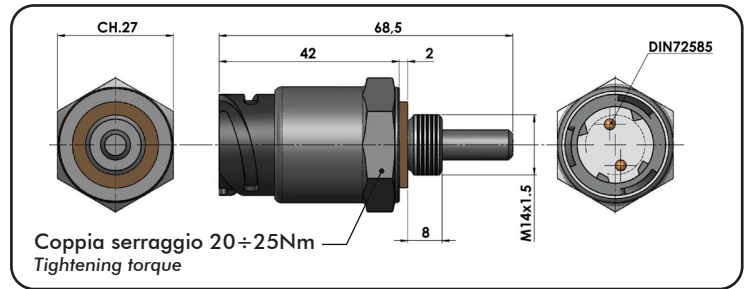
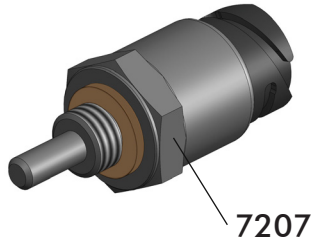
01/06/2021

99731100105 Rev: AM

pag.1

CODICE / Order code
31100100205

CONTATTO / Contact
Normalmente aperto
Normally open



30600101518

Cablaggio per interruttore DIN 72585 - L= 6 m
Harness for DIN 72585 switch - L= 6 m



PACKARD (AMP superseal 1,5 series)

- Interruttore meccanico a puntale da utilizzarsi unicamente con carico max. sui contatti:

- 3W lampada
- Tensione 12V - 24V
- Temperatura di esercizio: -25°C +80°C

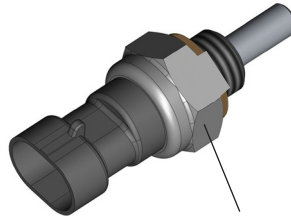
- Mechanical push button switch only to be used with max load on contacts:

- 3W bulb
- Voltage 12V - 24V
- Working temperature: -25°C +80°C

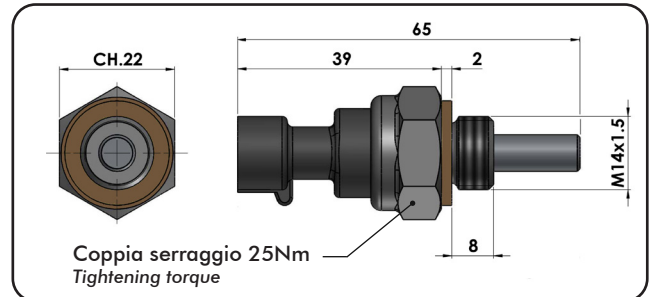
CODICE / Order code
31100100107

CONTATTO / Contact
Normalmente chiuso
Normally closed

- Interruttore NON idoneo per impiego in ambiente con pressione.
- Switch NOT suitable for use in pressurised environments.



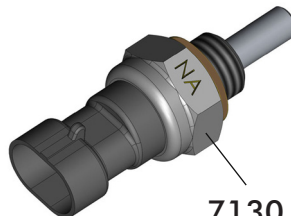
7131



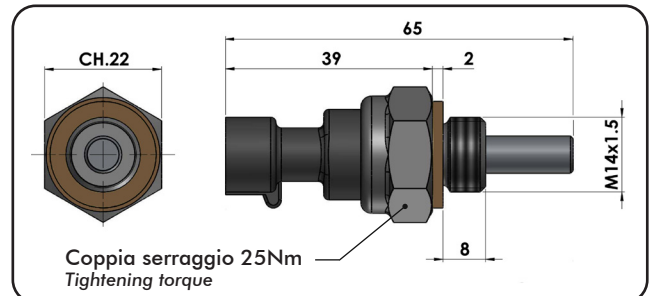
CODICE / Order code
31100100116

CONTATTO / Contact
Normalmente aperto
Normally open

- Interruttore NON idoneo per impiego in ambiente con pressione.
- Switch NOT suitable for use in pressurised environments.



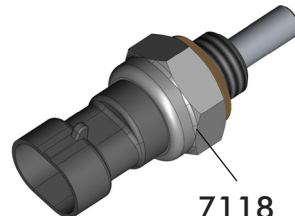
7130



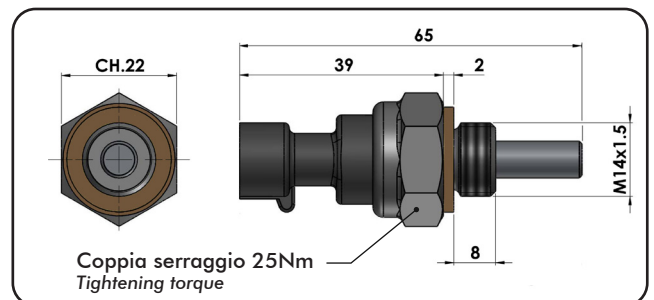
CODICE / Order code
31100100081

CONTATTO / Contact
Normalmente chiuso
Normally closed

ALTA PRESSIONE
HIGH PRESSURE
MAX. 12,5 bar



7118



30600300106 *

Cablaggio per interruttore con
connettore AMP-Packard - L= 4 m
Harness for AMP-Packard switch - L= 4 m



* Codice per ricambio - Fornito di serie con le PTO che montano interruttore Packard
* Spare part code - Already Supplied with PTOs which requires Packard switch

pag.3